

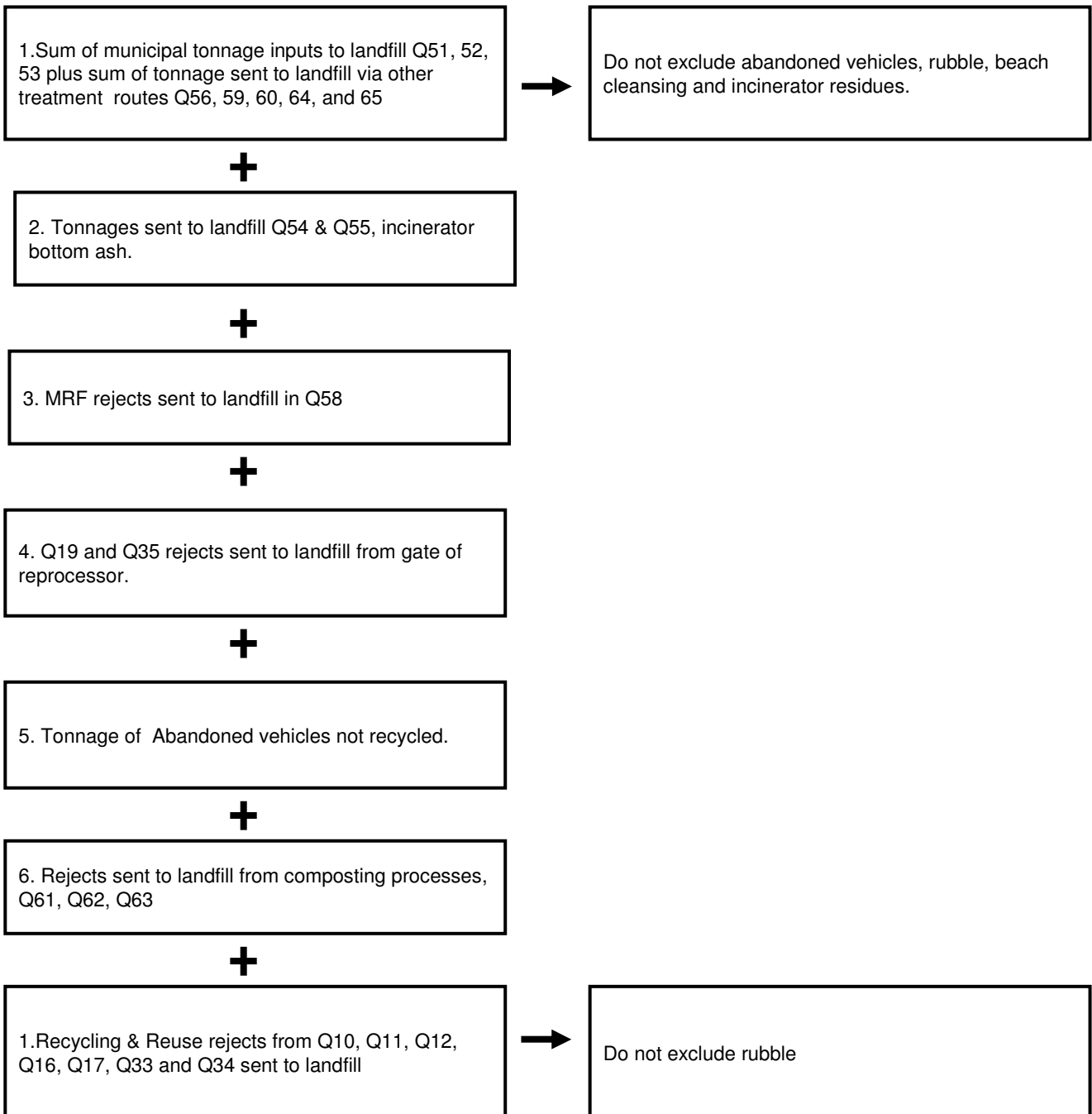
**WMT/004 - a) The total tonnage of and b) the percentage of municipal wastes sent to landfill.**

**What the indicator measures:**

$$\frac{\text{Total tonnage of municipal waste collected which is landfilled}}{\text{Total tonnage of municipal waste arisings}} \times 100$$

How the numerator and denominator are calculated using WasteDataFlow is summarised below setting out the questions data is drawn from. **Do not exclude abandoned vehicles, rubble, beach cleansing and incinerator residues.**

**Numerator**



## WMT/004 - a) The total tonnage of and b) the percentage of municipal wastes sent to landfill.

### What the indicator measures:

$$\frac{\text{Total tonnage of municipal waste collected which is landfilled}}{\text{Total tonnage of municipal waste arisings}} \times 100$$

*Numerator*                      *Denominator*

How the numerator and denominator are calculated using WasteDataFlow is summarised below setting out the questions data is drawn from. **Do not exclude abandoned vehicles, rubble, beach cleansing and incinerator residues.**

### Denominator

